

## SCM3-175 LUMINAIRE

- **GENERAL DESCRIPTION**

The enclosed luminaire shall be weather resistant (protection degree IPP55), with an independent reflector from the housing. It shall operate with high-pressure sodium, metal halide and mercury vapour lamps up to 175 watts. The luminaire shall be suitable for square-shape post-top assembly with rectangular arm (SCM3-175/B), Optionally, it shall be possible circular-shape post-top assembly (options /L, /SP and /DP).

In addition, it shall be integrated the ballast compartment into the luminaire.

The luminaire shall provide asymmetric photometric distribution.

Ballast, housing, luminaire and optical assembly shall all belong to the same manufacturer to ensure a suitable quality.



- **MECHANICAL DESCRIPTION**

Housings and ballast door shall be made of die-cast aluminium. The standard mounting arm shall be made of anti-corrosion steel. These pieces shall be electrostatically sprayed with polyester powder paint finish and oven cured at 180°C. The finishing shall fit the UNE 48024-80, 48059-82 and 48099-85 standards.

The lamp is accessible by loosening two anti-corrosion safety pin screws located on the door front. The luminaire shall have a folding door to provide an easy access.

The luminaire shall provide multiple mounting systems:

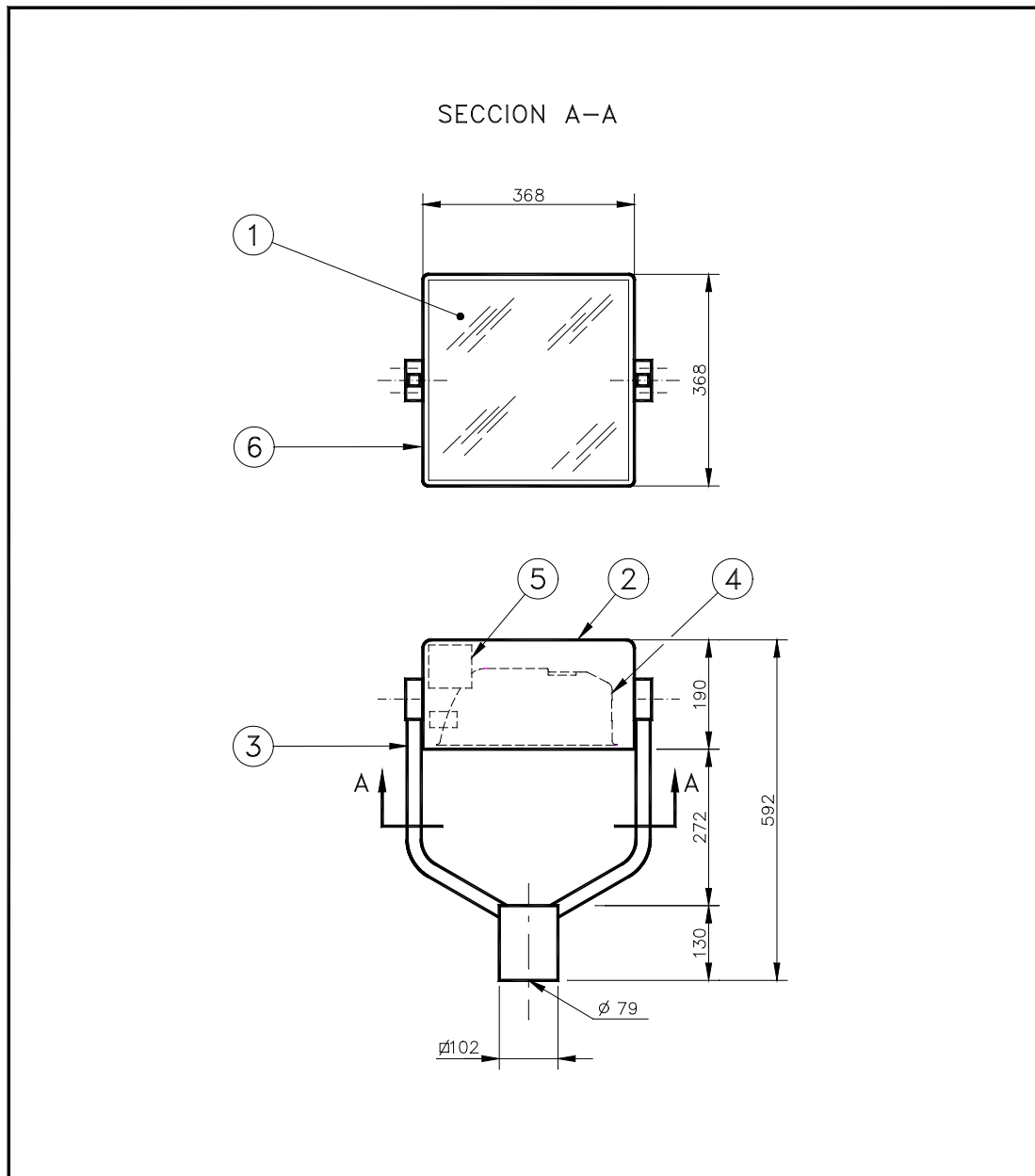
- Standard mounting (SCM3-175/B): Rectangular arm for mounting to square-section columns. It shall be made of anti-corrosion steel. Optionally, a wall-mounting adaptor WMPBL-SCM can be supplied, compatible with rectangular arm.
- SCM3-175/SP: Fitting to 60mm-diameter vertical tube (one luminaire)
- SCM3-175/DP: Fitting to 60mm-diameter vertical tube (two luminaires at 180°).
- SCM3-175/L: Trunnion for fitting to 60mm-diameter vertical tube

- **OPTICAL ASSEMBLY**



The optical assembly shall be sealed by way of ethylene-propylene diene rubber gasket. It shall include an aluminium reflector and flat tempered glass lenses, which are mechanical and electrical shock resistant. There exists an optional polycarbonate or acrylic prismatic drop lens.

The reflector shall be made of one-piece high-purity aluminium, hydroformed to ensure accurate and uniform thickness. Its finish shall be achieved by way of ALGLAS process, i.e., a thin unbreakable glass film covering (silica almost pure) using chemical processes, which provide high corrosion protection, durability and easy maintenance and cleaning.

The optical assembly shall include the porcelain lampholder to place the lamp in horizontal position.



6	MARCO DE PUERTA	FUNDICION INYECTADA DE ALUMINIO
5	EQUIPO ELECTRICO	
4	REFLECTOR	ALUMINIO ACABADO "ALGLAS"
3	LIRA DE MONTAJE	TUBO DE ACERO $\varnothing$ 25,6
2	CARCASA	FUNDICION INYECTADA DE ALUMINIO
1	CIERRE	VIDRIO TEMPLADO DE 3,2mm.

POSICION		DESCRIPCION			MATERIAL	
1	2	1.991	FECHA	FIRMA	 	
		DIBUJO	5-11	B.A.C.		
		REVISO				
		APROBO	5-11	A.M.R.		
MODIFICACIONES		TIPO	ESCALA		<p style="text-align: center;"><b>SCM3-175/L</b> HASTA 175W.</p>	
					<p style="text-align: center;"><b>71-4029</b></p>	
					Sustituye al : Sustituido por :	